

In most countries...

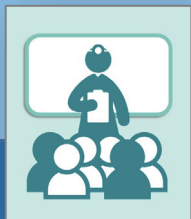
Nurses & Midwives

ARE MORE THAN HALF TOTAL HEALTH WORKFORCE*

Nurses & Midwives bring **people-centred care** to the communities where they are needed, helping to improve health outcomes and deliver cost-effective services.

An estimated **18 million more health workers**, primarily in low-resource settings, will be needed to attain high and effective coverage to ensure healthy lives for all by 2030.

Global strategies to strengthen Nursing & Midwifery



Education, collaboration & ongoing professional development



Effective policy, planning, leadership & governance



Strong regulation and scope of practice



Investment in workforce development

* Vision for Nursing & Midwifery towards #Workforce2030

“Progress towards universal health coverage and the UN Sustainable Development Goals (SDGs) by ensuring equitable access to health workers within strengthened health systems”

United Nations Commission on
Health Employment & Economic Growth



HEALTH FOR ALL

UNIVERSAL HEALTH COVERAGE

Click on logos and mouse  icon for interactive links

THE GLOBAL NETWORK OF WHO COLLABORATING CENTRES FOR NURSING AND MIDWIFERY

is an independent international not-for-profit network of Collaborating Centres from WHO's six regions, focusing on nursing and midwifery. Founded in 1988, the Network supports WHO's efforts toward universal health coverage.



UTS:
WORLD HEALTH ORGANIZATION COLLABORATING CENTRE
FOR NURSING, MIDWIFERY & HEALTH DEVELOPMENT

Follow WHO CC UTS on Twitter
Michele Rumsey @whoccmichele

