

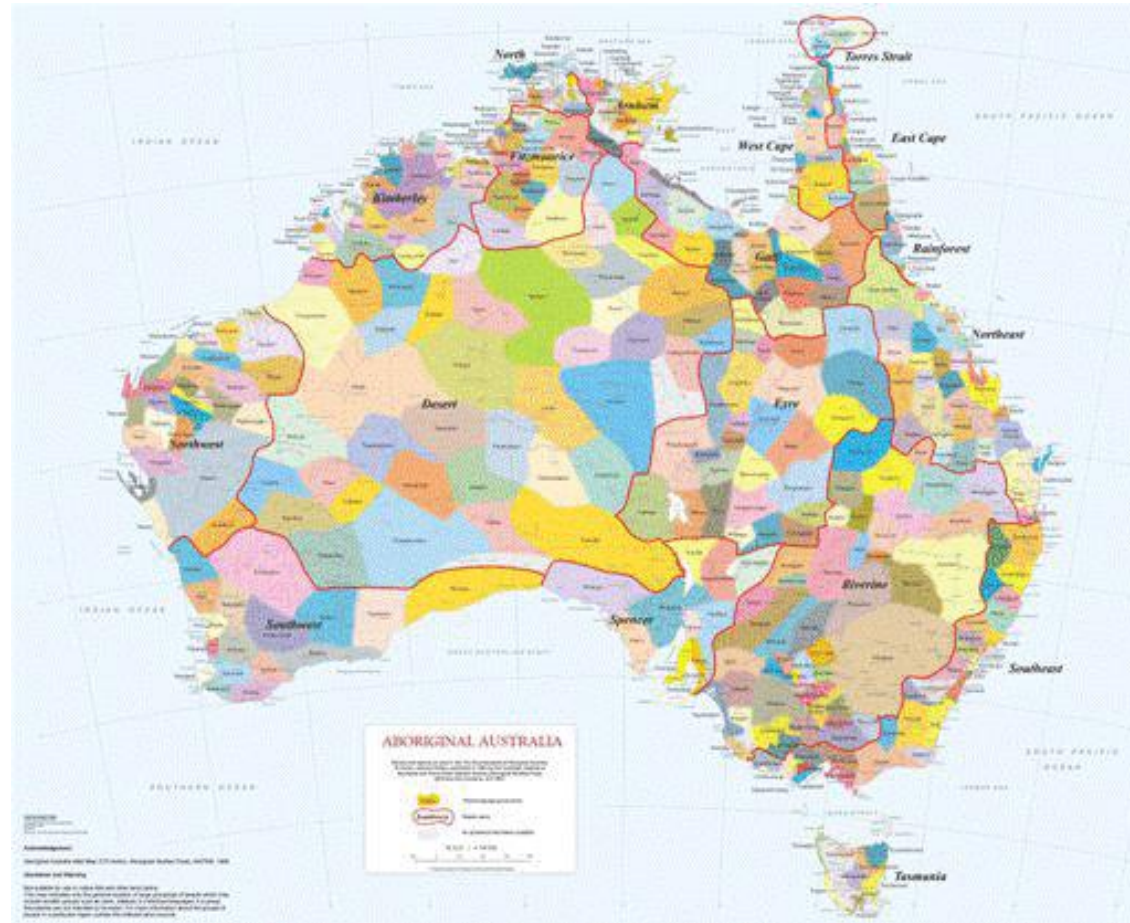
# EAL/D Education for Aboriginal Students in NSW 2022: 'Putting the 'D' in EAL/D'

Adrian Robinson, EAL/D Advisor, Aboriginal Outcomes and Partnerships/Connected Communities

Dr. Rowan Savage, Principal Policy Officer, Learning (School) Strategy, Aboriginal Outcomes and Partnerships Directorate

# Acknowledgment of Country

Pre 1788 languages map



# Aboriginal EAL/D learners in NSW

2021 ERN data

There are approximately 67 000 Aboriginal students in NSW schools.

There is a huge gap in the data relating to EAL/D for these students.

AE-465 students

61 students have a NSW Aboriginal language listed in ERN

58 students listed as having a non-NSW Aboriginal language (including Kriol and Torres Strait Creole).

20 students listed as 'other Australian Indigenous Language'

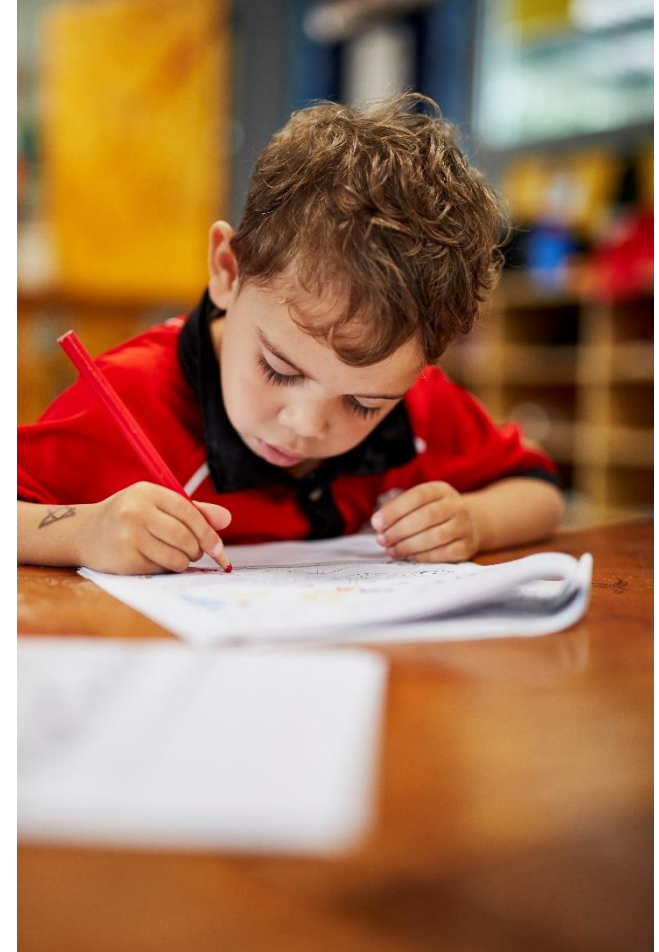
Q: Does your ERN data accurately reflect the EALD needs of your Aboriginal students?

Q: How do schools respectfully discuss dialect/AE with their parents and communities?

# Who are Aboriginal EAL/D learners?

Aboriginal EAL/D learners are students whose first language is a language or *dialect* other than Standard Australian English and **who require additional support to assist them to develop English language proficiency.**

Are there  
Aboriginal EAL/D  
learners in your  
school?



# Aboriginal Ways of Using English

Professional learning 2023

AOPD is working with Connected Communities (with input from Multicultural Education) to produce a professional learning package to support schools in NSW to better identify Aboriginal EALD learners in NSW.

Toomelah PS, Dareton PS, Sarah Redfern High school

3 videos and a PL Guide

Topics include:

Who are Aboriginal EALD learners in NSW? Do students have awareness that they use a different dialect of English? What is NSW Aboriginal English? How schools can support their staff and their Aboriginal students to work across Aboriginal English and Standard Australian English (SAE).

Featuring Interviews with staff and students

To be launched in 2023

# Some context

## Some terminology

- SLA-second language acquisition
- SDA-second dialect acquisition (Jeff Siegel, *Second Dialect Acquisition*. Cambridge: Cambridge University Press).
- Dialect Awareness
- '*Aboriginal Ways of Using English*' (Diana Eades) includes Aboriginal English-is not a universally accepted or known term outside of education/schools-some vernaculars have no name. Not all Aboriginal students will use it. Some will use SAE.
- Traditional/heritage/mother tongue languages (e.g. Pitjantjatjara, Torres Strait Creole, Kriol, Wiradjuri)
- Language revitalisation/reclamation
- A student may identify with a NSW language (Wiradjuri) but we cannot assume any proficiency in that language-it is often a marker of identity and not necessarily a LBOTE-the student will still most likely use AE (or even SAE) as their main home language.

# LBOTE

## Language background other than English

Aboriginal EAL/D AND LBOTE example: Child speaks Pitjantjatjara as their main home language and uses English only at school.

In NSW many Aboriginal students will identify with an Aboriginal language (eg Wiradjuri) but we cannot assume any knowledge or proficiency in the language ('Heritage Languages').

Example: Student uses 'AE' so could be EAL/D but NOT LBOTE.

Majority of NSW Aboriginal students are NOT LBOTE

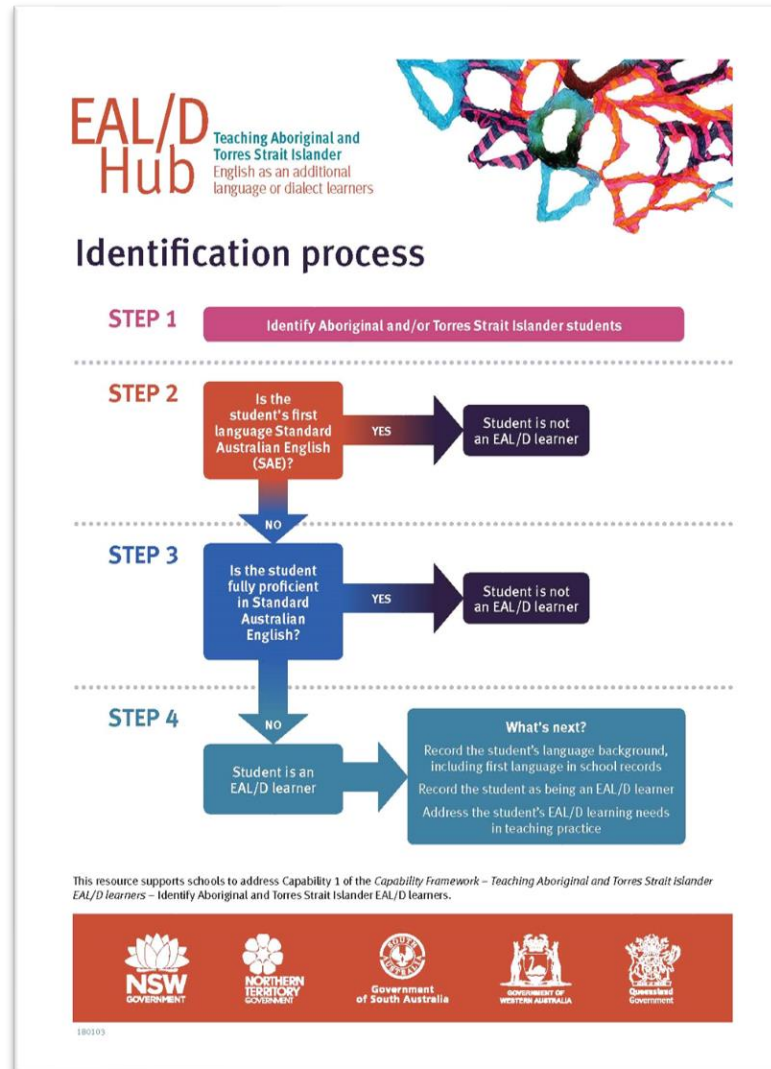
but they are 'dialect learners'.

A more accurate term would be 'LBOTSAE'-language background other than SAE



# Identifying Aboriginal EAL/D learners

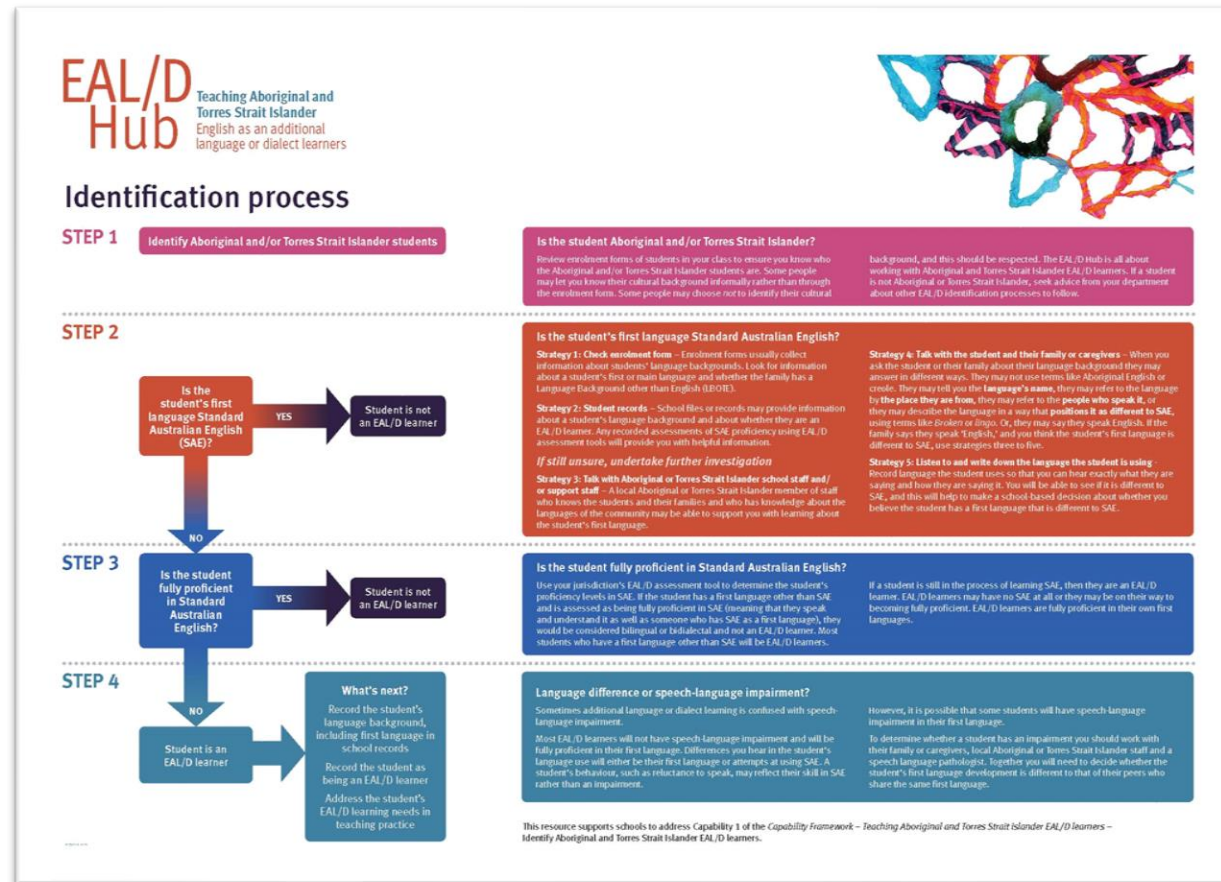
From the EAL/D Hub-not an official DoE document





# The EAL/D Hub: identifying Aboriginal EAL/D learners

NB: this is not an official DoE document



# Resources

EAL/D Hub

## EAL/D Hub



HOME ABOUT THE EAL/D HUB CAPABILITY FRAMEWORK CONTACT US



<https://www.powerhouseworkforce.com/eal-d-hub/>

# The EAL/D Hub

Also in use with NT, WA, QLD & SA

<https://nswealdhub.powerhousehub.net/>

Is externally hosted

Is NOT available through MYPL at the moment

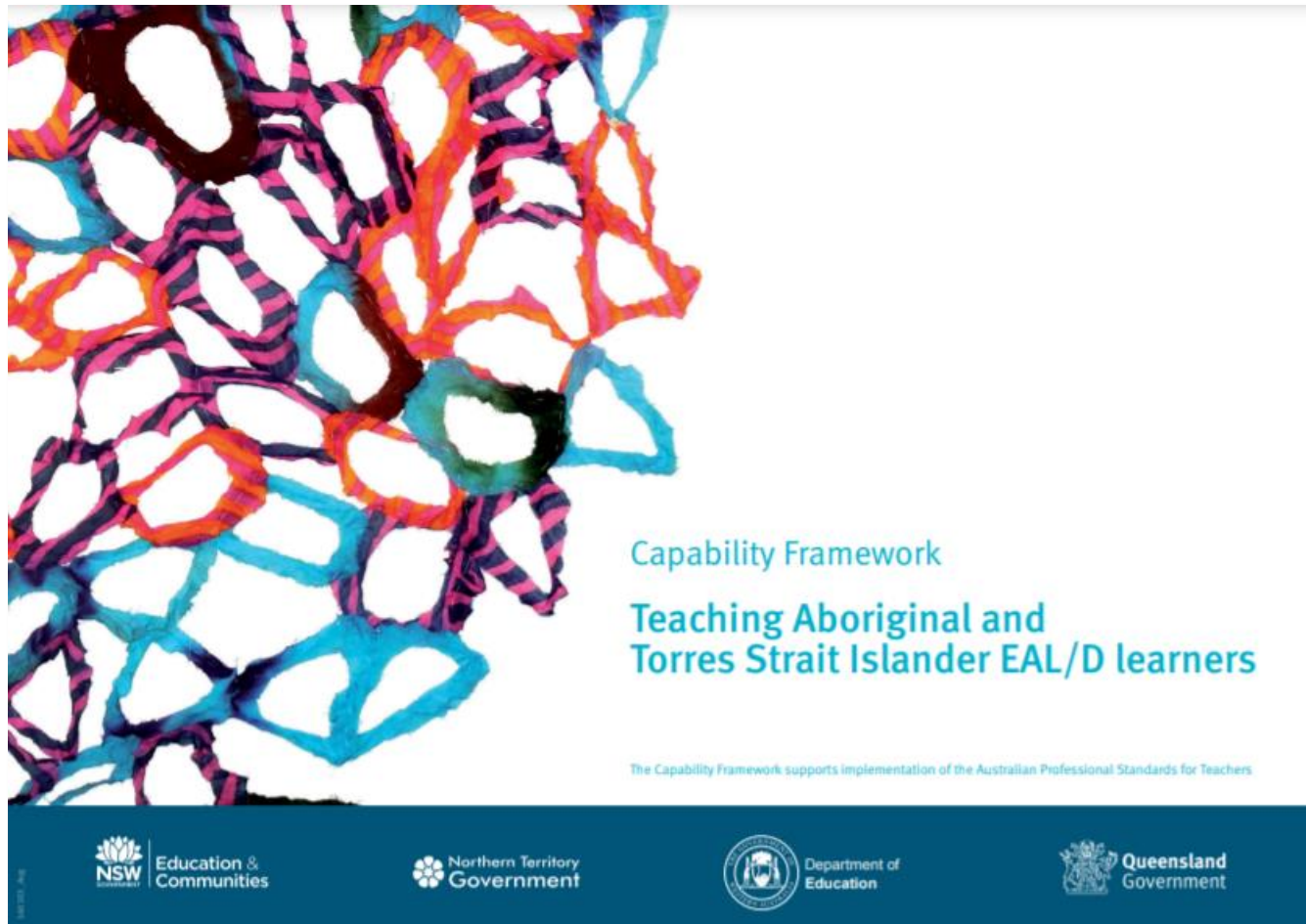
Is currently elective PL with NESAs (15 hours) but is likely to become 25 hours accredited PL early 2023

8 modules, 29 ebooks, videos, learning activities, self-paced, certificates of completion

Topics-The Learners and their Languages, Ways of Working, Identifying EAL/D Learners, How Language Works, Learning an additional Language or Dialect, How SAE Works, Assessment and Reporting, Curriculum Planning and Pedagogy.

# Resources

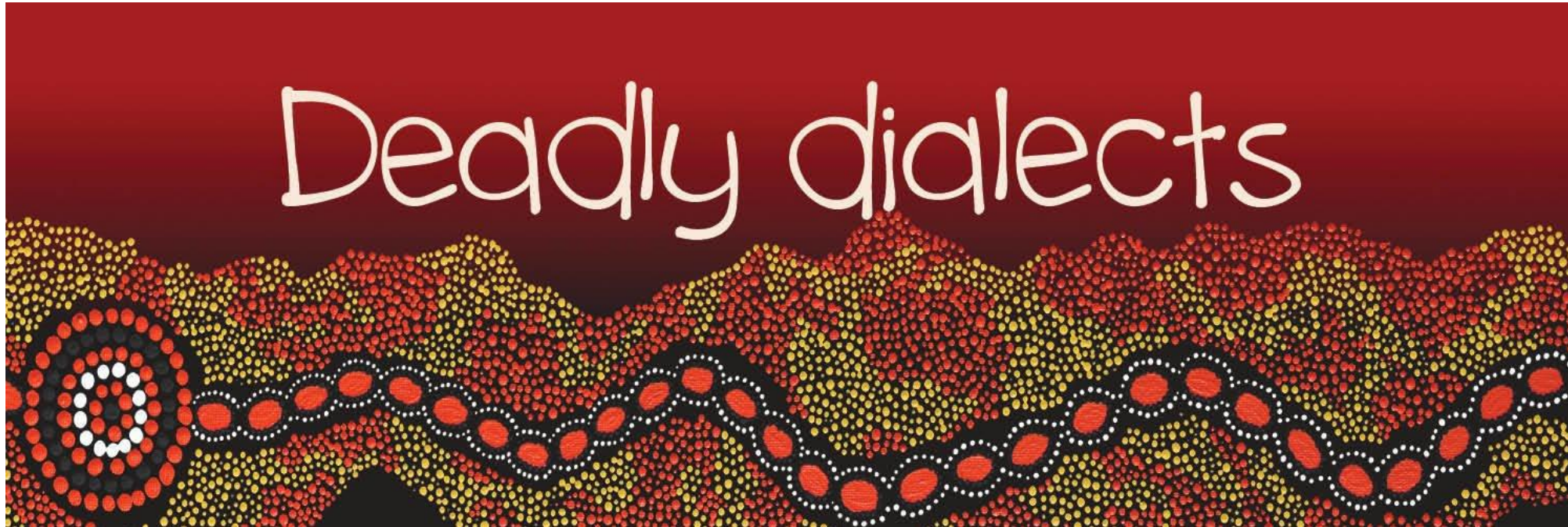
## Capability Framework



<https://education.qld.gov.au/student/Documents/capability-framework-teaching-aboriginal-torres-strait-islander-eald-learners.pdf>

# Resources

EAL/D Education – Deadly Dialects



- <https://education.nsw.gov.au/teaching-and-learning/professional-learning/priority-professional-learning/deadly-dialects-p-2-professional-learning>

# Contact details:

Adrian Robinson, EAL/D Advisor, Learning (School) Strategy, Aboriginal Outcomes and Partnerships, [Adrian.Robinson1@det.nsw.edu.au](mailto:Adrian.Robinson1@det.nsw.edu.au),  
Ph: 0448 590 624

Dr. Rowan Savage, Principal Policy Officer, Learning (School) Strategy, Aboriginal Outcomes and Partnerships Directorate

T 02 7814 2777 | 0439 135 083 | E [rowan.savage@det.nsw.edu.au](mailto:rowan.savage@det.nsw.edu.au)