



Interactive Whiteboards @



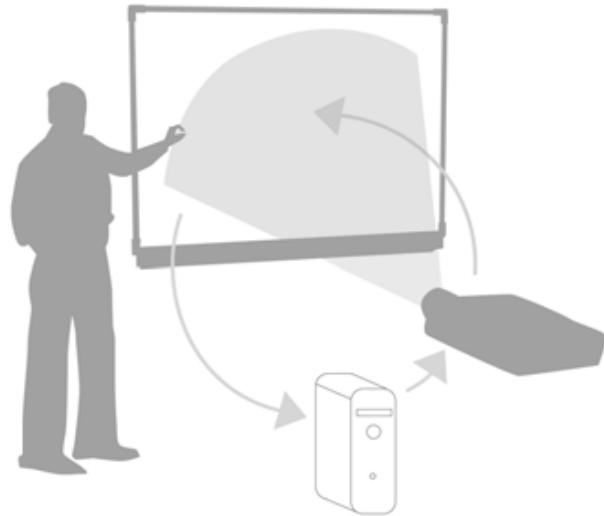
Using the Interactive Whiteboards

- Interactive Whiteboards @ UTS
- Starting and connecting
- Using the IWB in basic modes

Interactive Whiteboards (IWB) @ UTS

Overview

The brand of interactive whiteboard (IWB) in Building 6 is the “SMART board”. The IWB is connected to a projector and a resident computer. The resident computer has been set up with SMART software to drive the IWB. This enables the IWB to be used in a number of modes.

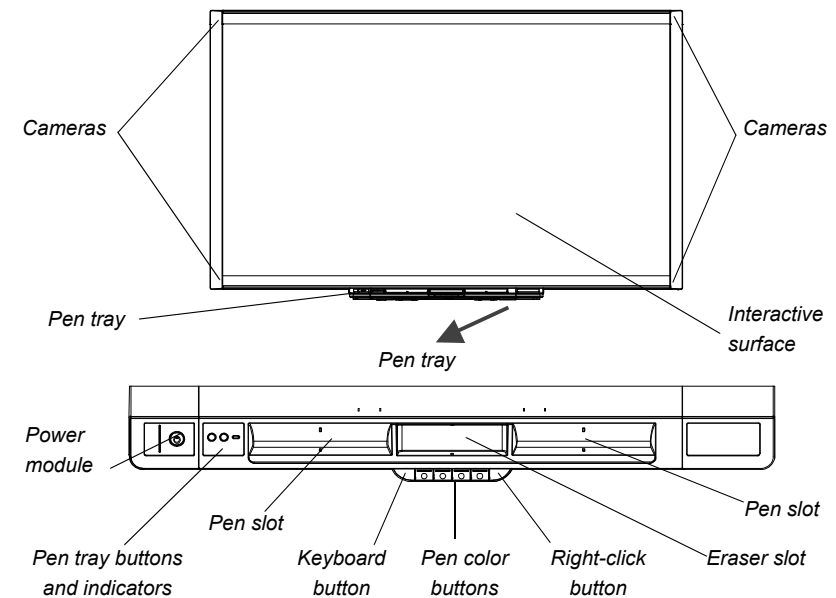


Basic Modes

In basic modes, the IWB can be used as a:

- Projector
- Digital whiteboard

Main Elements

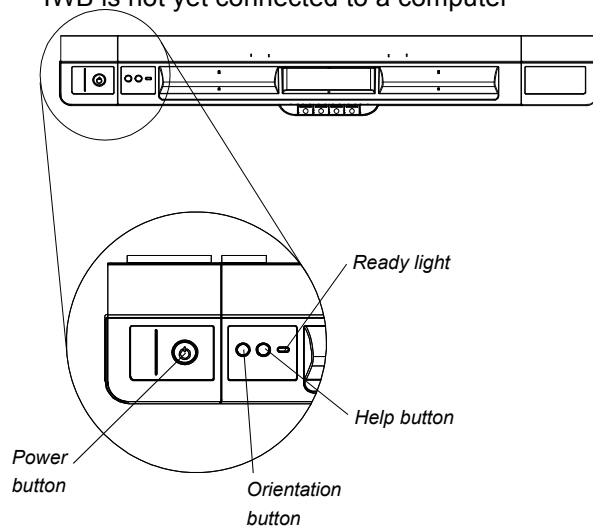


Starting and connecting

Starting up the IWB

Is the IWB power turned on?
If you intend to use the IWB in a class, turn it on as soon as you enter the room.

Press and hold the power button until it turns **GREEN**.
The IWB now needs to connect to the resident computer.
If the power is already on, and the *Ready Light* is **RED**, this means the IWB is not yet connected to a computer



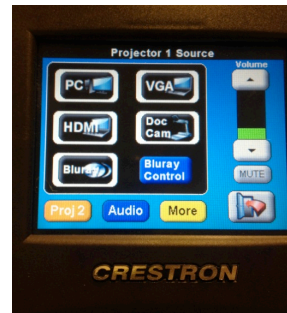
Using your own laptop or external device

If you have a situation where you need to connect your own laptop or another external device you can book a session with AVS to assist in setting up that device. Contact AVS on extn.5252 - please allow 24 hours notice.

Starting the IWB projector



The presenter's desk uses a standard touch panel. Press the "Press to begin" button. A "Projector 1 source" menu will come up on the panel.



On the bottom left of the panel there is an **orange** button "Proj 2". Press the **orange** button to bring up "Projector 2 Source" menu.



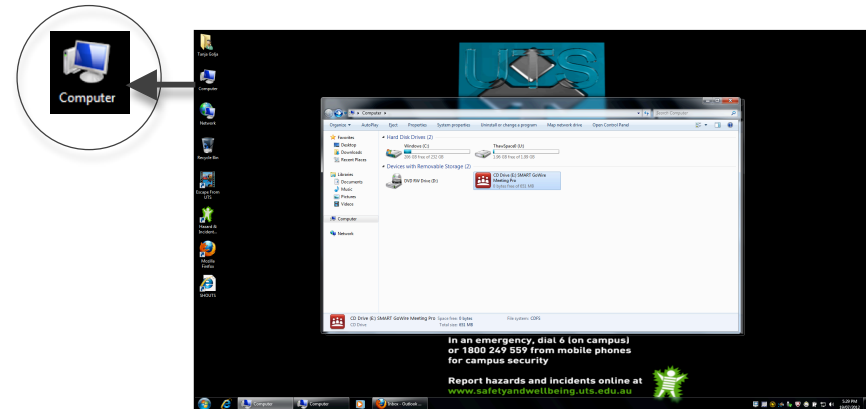
Select the "PC" source. The IWB projector will turn on automatically.

You should now see a login screen on both the resident computer and the IWB. Enter Staff ID and Password.

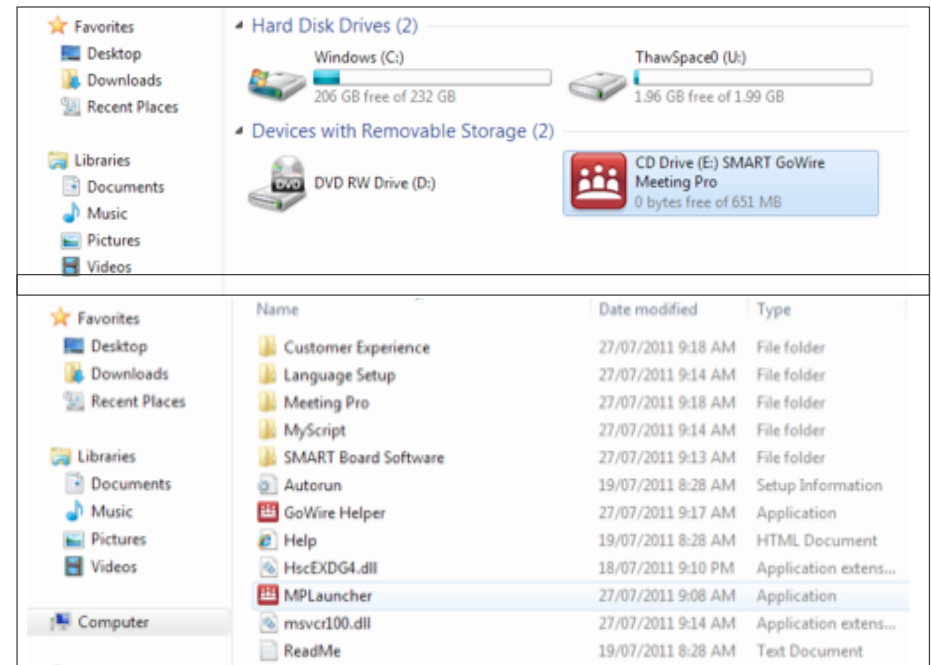
Launching the “Smart” Software

To achieve a connection between the IWB and the resident computer you will need to manually launch the “Smart” software from the resident computer.

Double click the ‘Computer’ icon on the desktop and the Computer drive window opens.



Double click the “SMART GoWire Meeting Pro” icon on in the window.



Double click “MPLauncher”
The IWB will attempt to connect to the resident computer and the *Ready Light* will flash on/off **GREEN**. This light stops flashing when the connection is completed.

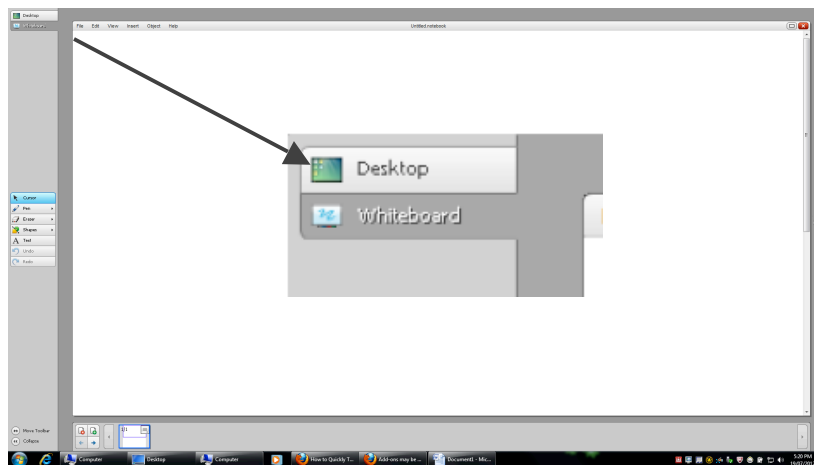
Using the IWB in basic modes

Once the Smart Software has been launched it will activate the IWB interface. You can now use the IWB surface and software in various modes.

Note: Using the IWB in digital mode is preferable to writing on the IWB surface with a regular whiteboard marker due to cleaning requirements. If you use a regular whiteboard marker the IWB surface will need to be wiped down with a special cleaner otherwise the surface will smear.

IWB as projection screen

In the top left corner of the IWB surface there are two buttons that enable you to 'switch' between your PC desktop and the digital whiteboard interface of the IWB.

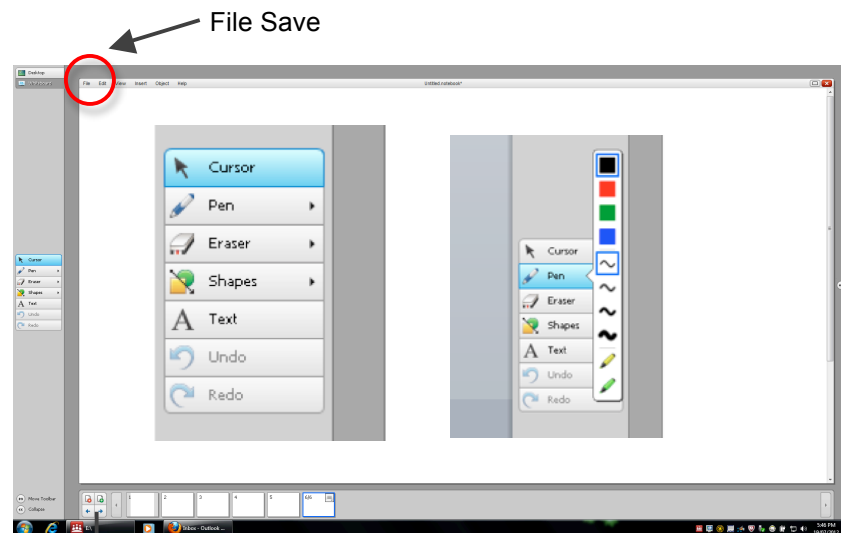


IWB as a digital whiteboard

In electronic mode you can write on the screen in several ways using any of the following:

- Your finger
- The IWB pen in the pen tray
- The "Pen" tool to write on the whiteboard surface.

To use the pen tool, touch the "pen" button on the screen menu. You can then choose colour, pen thickness and highlighting. If you want to save a copy of your work, select "File" then "Save".



Use the "Page" menu to add, delete and navigate between pages.